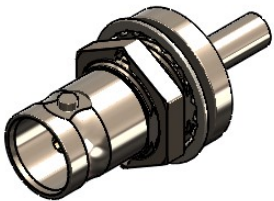


Revisions		
Issue	Date	Note
2	26/06/2025	See GTXPDC/1113



1. Mechanical

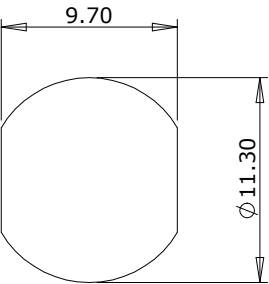
Cable Retention	Equal to breaking strain of cable
Durability	500 mating cycles
Lock Nut Torque	4.0 - 4.5Nm (35-40 in-lbs)

2. Environmental

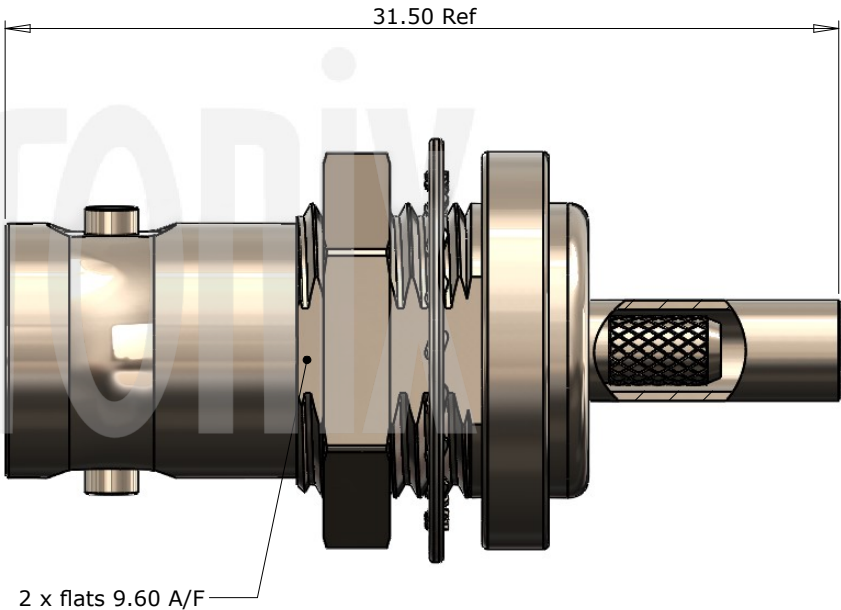
RoHS Compliant	Yes
Temperature Range	-65 to +165 degrees C



3. Electrical

Dielectric Withstanding	1500 Volts RMS Maximum
Impedance	75 ohms
Interface Frequency	12 GHz
Working Voltage	500 Volts RMS Maximum

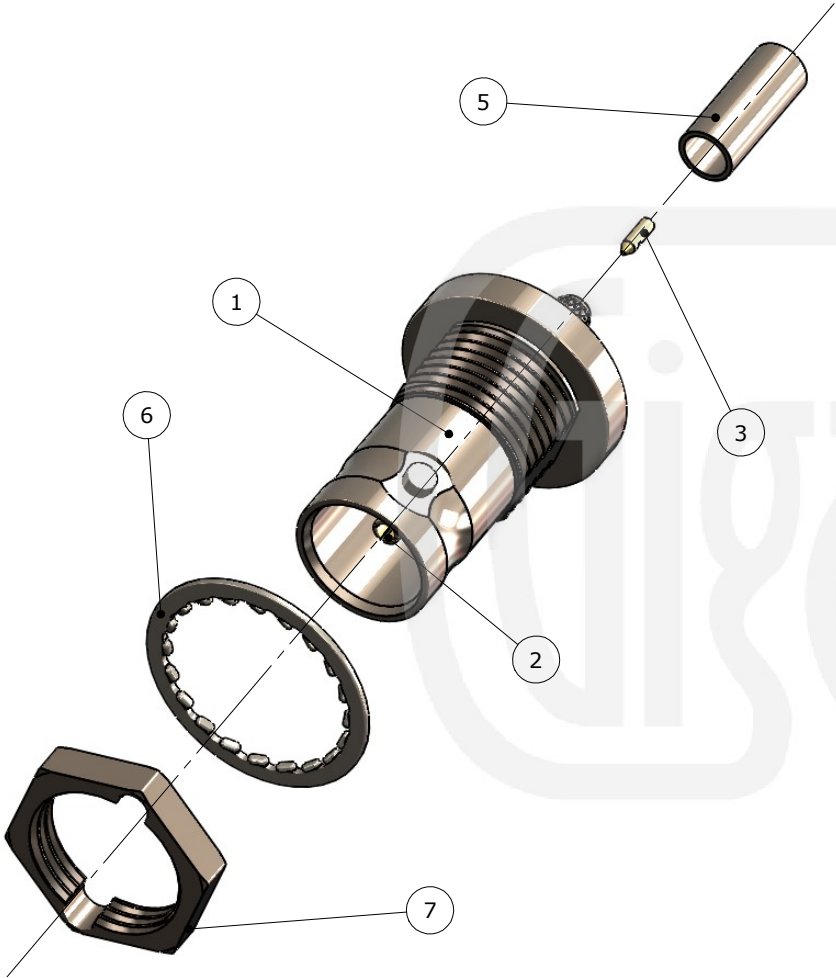


Panel Cut Out



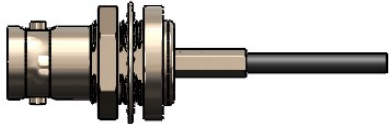
				<p>Unless otherwise specified tolerances 0.5-5 = ± 0.2 >5-30 = ± 0.4 >30-120 = ± 0.6 >120-315 = ± 1.0 >315-1000 = ± 1.6 Angles = $\pm 5^\circ$ Units = mm</p>		Author	PJP
7	Lock Nut	Brass	Nickel			Drawn by	PJP
6	Washer	Phosphor Bronze	Nickel			Drawing date	03/04/2025
5	Ferrule	Brass	Nickel			Checked by	DB
4	Dielectric	PTFE	White			Checked date	03/04/2025
3	Pin	Brass	Gold			Scale	Not to scale
2	Integral Contact	Phosphor Bronze	Gold			Part Number	BN02-0179-C06-Z-38
1	Body	Brass	Nickel	<p>This document is the confidential property of Gigatronix Limited and may not be copied, reproduced or transmitted to any third party without written authorisation.</p>		Title: BNC 12G SDI Crimp Bulkhead Jack, Circular Flange, Hex. Locknut, Belden RG179DT, RG179B/U	
Description		Material	Finish				

Revisions		
Issue	Date	Note
2	26/06/2025	See GTXPDC/1113



Assembly Instructions:

- Slide the ferrule onto the cable and strip the cable to the dimensions as shown, taking care not to nick the centre conductor or braid
- Solder the pin onto the centre core and slide the pin into the body, ensuring that the cable braid is on the outside of the connector mandril and that the pin is fully located
- Slide the ferrule forward and crimp




Crimp Die Sizes:
3.25mm Hex., Solder centre core

Strip Dimensions:
A=5.0mm, B=4.2mm, C=1.8mm



7	Lock Nut	Brass	Nickel
6	Washer	Phosphor Bronze	Nickel
5	Ferrule	Brass	Nickel
4	Dielectric	PTFE	White
3	Pin	Brass	Gold
2	Integral Contact	Phosphor Bronze	Gold
1	Body	Brass	Nickel
Description		Material	Finish

Unless otherwise specified tolerances 0.5-5 = ±0.2 >5-30 = ±0.4 >30-120 = ±0.6 >120-315 = ±1.0 >315-1000 = ±1.6 Angles = ±5° Units = mm	
	This document is the confidential property of Gigatronix Limited and may not be copied, reproduced or transmitted to any third party without written authorisation.

		Author	PJP
		Drawn by	PJP
		Drawing date	03/04/2025
		Checked by	DB
		Checked date	03/04/2025
		Scale	Not to scale
Part Number	BN02-0179-C06-Z-38		
Title:	BNC 12G SDI Crimp Bulkhead Jack, Circular Flange, Hex. Locknut, Belden RG179DT, RG179B/U		