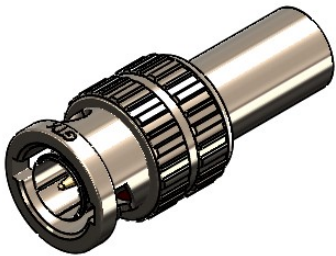


Revisions		
Issue	Date	Note
3	21/10/2025	See note GTXPDC/1146



1. Mechanical

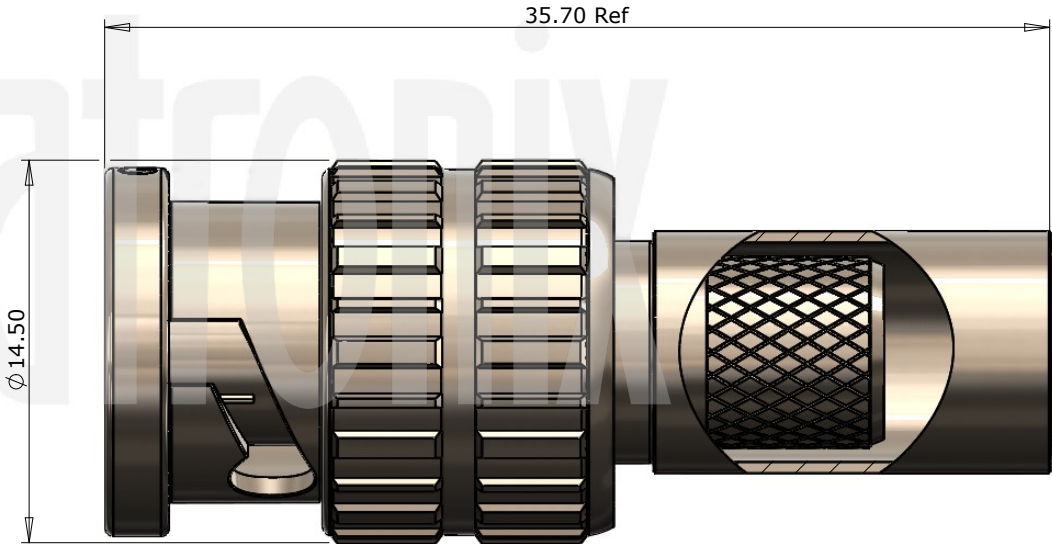
Cable Retention	Equal to breaking strain of cable
Captive Contact	Yes
Contact Gender	Male
Contact Termination	Crimp
Durability	500 mating cycles
Fixing Method	Crimp


2. Environmental

RoHS Compliant	Yes
Temperature Range	-65 to +165 degrees C

3. Electrical

Dielectric Withstanding	1500 Volts RMS Maximum
Impedance	75 ohms
Interface Frequency	12 GHz
Working Voltage	500 Volts RMS Maximum



				Unless otherwise specified tolerances 0.5-5 = ±0.2 >5-30 = ±0.4 >30-120 = ±0.6 >120-315 = ±1.0 >315-1000 = ±1.6 Angles = ±5° Units = mm		Author PJP	
						Drawn by PJP	
						Drawing date 09/07/2020	
5	Ferrule	Brass	Nickel			Checked by DB	
4	Dielectric	PTFE	White			Checked date 09/07/2020	
3	Pin	Brass	Gold			Scale	Not to scale
2	Coupling Nut	Brass	Nickel	This document is the confidential property of Gigatronix Limited and may not be copied, reproduced or transmitted to any third party without written authorisation.	Part Number BN15-5500-C06X-Z		
1	Body	Brass	Nickel		Title: BNC 12G SDI Crimp Plug, Extended Coupling Nut, Nickel Plated, Canare L-5.5CUHD		
	Description	Material	Finish				

Revisions		
Issue	Date	Note
3	21/10/2025	See note GTXPDC/1146

ASSEMBLY INSTRUCTIONS

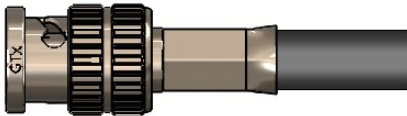
Assembly Instructions:

1) Slide the ferrule onto the cable and strip the cable to the dimensions as shown, taking care not to nick the centre conductor or braid



2) Crimp the pin onto the centre core and slide the pin into the body until it captivates, ensuring that the cable braid is on the outside of the connector mandril


3) Slide the ferrule forward and crimp



Crimp Die Sizes:
8.05mm Hex., 1.62mm sq.

Strip Dimensions:
A=9.0mm, B=6.5mm, C=3.5mm



				Unless otherwise specified tolerances 0.5-5 = ± 0.2 >5-30 = ± 0.4 >30-120 = ± 0.6 >120-315 = ± 1.0 >315-1000 = ± 1.6 Angles = $\pm 5^\circ$ Units = mm		Author	PJP
						Drawn by	PJP
						Drawing date	09/07/2020
						Checked by	DB
						Checked date	09/07/2020
5	Ferrule	Brass	Nickel	This document is the confidential property of Gigatronix Limited and may not be copied, reproduced or transmitted to any third party without written authorisation.	Part Number BN15-5500-C06X-Z Title: BNC 12G SDI Crimp Plug, Extended Coupling Nut, Nickel Plated, Canare L-5.5CUHD	Scale	Not to scale
4	Dielectric	PTFE	White				
3	Pin	Brass	Gold				
2	Coupling Nut	Brass	Nickel				
1	Body	Brass	Nickel				
Description		Material	Finish				