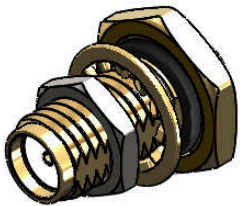


| Revisions | | |
|-----------|------------|-----------------|
| Issue | Date | Note |
| 3 | 10/12/2025 | See GTXPDC/1172 |



DATASHEET

1. Mechanical

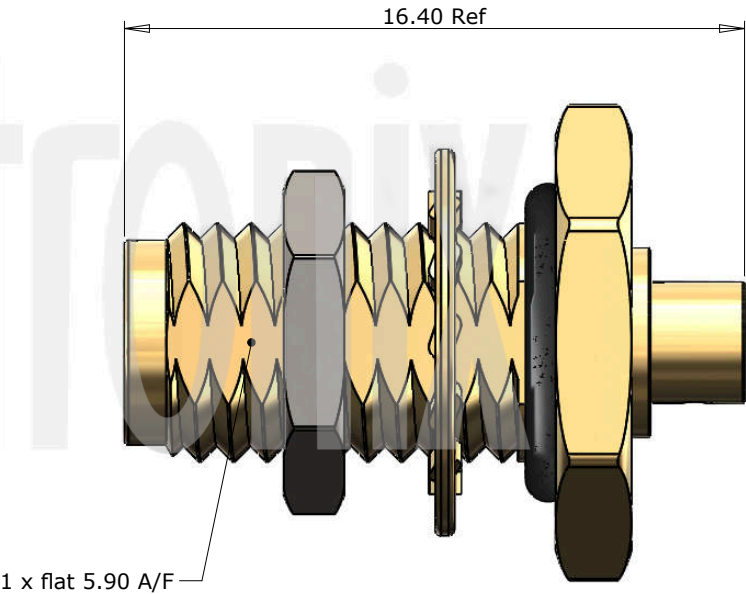
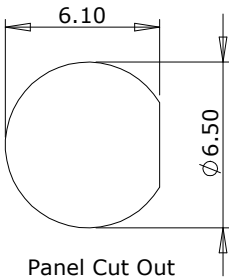
| | |
|-------------------|-------------------|
| Cable Retention | 136N |
| Fixing Method | Solder |
| Durability | 500 mating cycles |
| Contact Retention | 27N |


2. Environmental

| | |
|-------------------|-----------------------|
| RoHS Compliant | Yes |
| Temperature Range | -65 to +165 degrees C |

3. Electrical

| | |
|-------------------------|-----------------------|
| Dielectric Withstanding | 750 Volts RMS Maximum |
| Impedance | 50 ohms |
| Interface Frequency | 12.4 GHz |
| Working Voltage | 335 Volts RMS Maximum |



| | | | | | | | |
|---|--------------------|------------------|---------------|---|---|--|--|
| | | | | <p>Unless otherwise specified tolerances</p> <p>0.5-5 = ±0.2</p> <p>>5-30 = ±0.4</p> <p>>30-120 = ±0.6</p> <p>>120-315 = ±1.0</p> <p>>315-1000 = ±1.6</p> <p>Angles = ±5°</p> <p>Units = mm</p> |  | Author PJP | |
| 7 | Dielectric | PTFE | White | | | Drawn by PJP | |
| 6 | O Ring | Silicone | Black | | | Drawing date 23/01/2018 | |
| 5 | Washer | Stainless Steel | Passivated | | | Checked by DB | |
| 4 | Lock nut | Stainless Steel | Passivated | | | Checked date 30/01/2018 | |
| 3 | Pin | Brass | Gold | | | Scale Not to sale | |
| 2 | Contact | Beryllium Copper | Gold | <p>This document is the confidential property of Gigatronix Limited and may not be copied, reproduced or transmitted to any third party without written authorisation.</p> | Part Number MA02-0405-R41WP | Title: SMA Waterproof Solder Bulkhead Jack, IP68, Gold Plated Stainless Steel, RG405, .085 semi-rigid | |
| 1 | Body | Stainless Steel | Gold | | | | |
| | Description | Material | Finish | | | | |

| Revisions | | |
|-----------|------------|-----------------|
| Issue | Date | Note |
| 3 | 10/12/2025 | See GTXPDC/1172 |

ASSEMBLY INSTRUCTIONS

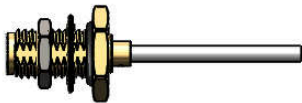
Assembly Instructions:

1) Strip the cable to the dimensions as shown, taking care not to nick the centre conductor



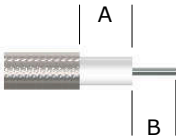
2) Solder the pin onto the centre core and slide the pin into the body, ensuring that the contact is fully located

3) Solder the outer shield of the cable to the connector mandril

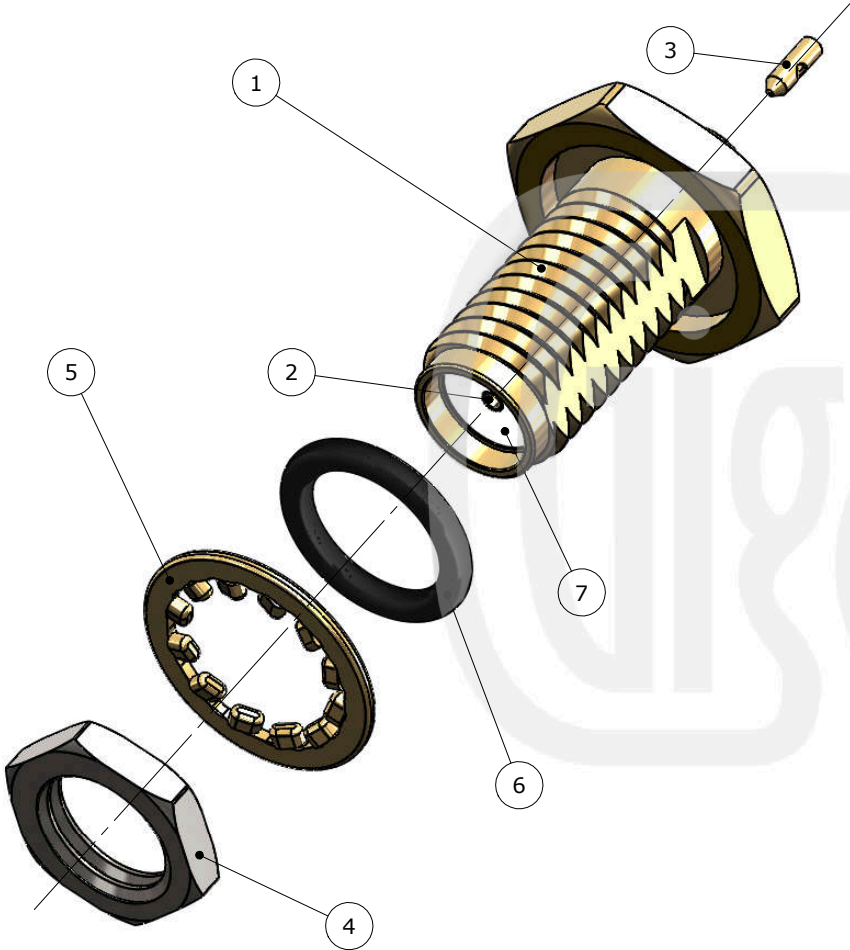



Strip Dimensions:

Semi Rigid (using a 0.5mm spacer) - A=0.0mm, B=2.5mm
 Conformable - A=0.5mm, B=2.0mm



Conformable FEP - A=6.0mm, B=0.5mm, C=2.0mm



| | | | | | | | |
|--------------------|------------|------------------|---------------|---|--|--------------|--------------|
| | | | | Unless otherwise specified tolerances 0.5-5 = ± 0.2 >5-30 = ± 0.4 >30-120 = ± 0.6 >120-315 = ± 1.0 >315-1000 = ± 1.6 Angles = $\pm 5^\circ$ Units = mm |  | Author | PJP |
| 7 | Dielectric | PTFE | White | | | Drawn by | PJP |
| 6 | O Ring | Silicone | Black | | | Drawing date | 23/01/2018 |
| 5 | Washer | Stainless Steel | Passivated | | | Checked by | DB |
| 4 | Lock nut | Stainless Steel | Passivated | | | Checked date | 30/01/2018 |
| 3 | Pin | Brass | Gold | This document is the confidential property of Gigatronix Limited and may not be copied, reproduced or transmitted to any third party without written authorisation. | Part Number MA02-0405-R41WP Title: SMA Waterproof Solder Bulkhead Jack, IP68, Gold Plated Stainless Steel, RG405, .085 semi-rigid | Scale | Not to scale |
| 2 | Contact | Beryllium Copper | Gold | | | | |
| 1 | Body | Stainless Steel | Gold | | | | |
| Description | | Material | Finish | | | | |