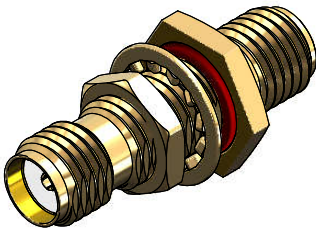


Revisions		
Issue	Date	Note
2	17/04/2025	See GTXPDC/1075



1. Mechanical

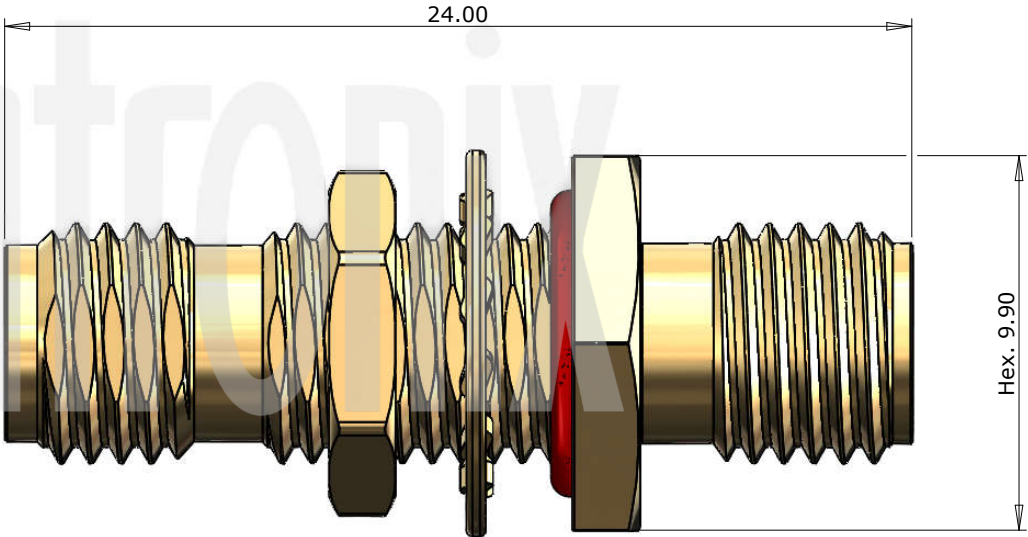
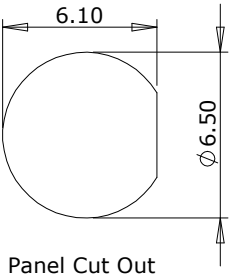
Fixing Method	Panel
Durability	500 mating cycles
Lock Nut Torque	0.9 to 1.1Nm / 8-10 in-lbs
Maximum Panel Thickness	5.50mm


2. Environmental

RoHS Compliant	Yes
Temperature Range	-65 to +165 degrees C

3. Electrical

Dielectric Withstanding	1000 Volts RMS Maximum
Impedance	50 ohms
Interface Frequency	18 GHz
Working Voltage	500 Volts RMS Maximum



				Unless otherwise specified tolerances 0.5-5 = ±0.2 >5-30 = ±0.4 >30-120 = ±0.6 >120-315 = ±1.0 >315-1000 = ±1.6 Angles = ±5° Units = mm		Author	PJP
						Drawn by	PJP
6	O Ring	Rubber	Red			Drawing date	31/05/2018
5	Washer	SS41	Gold			Checked by	DB
4	Lock Nut	Brass	Gold			Checked date	07/06/2018
3	Dielectric	PTFE	White	This document is the confidential property of Gigatronix Limited and may not be copied, reproduced or transmitted to any third party without written authorisation.	<div>Part NumberMA02-10-A01</div> <div>Title: SMA Bulkhead Jack to Jack Adaptor, Gold Plated</div>	Scale	Not to scale
2	Contact	Beryllium Copper	Gold				
1	Body	Brass	Gold				
	Description	Material	Finish				