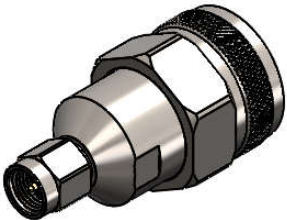


Revisions		
Issue	Date	Note
1	28/11/2025	See GTXPDC/1145



1. Mechanical

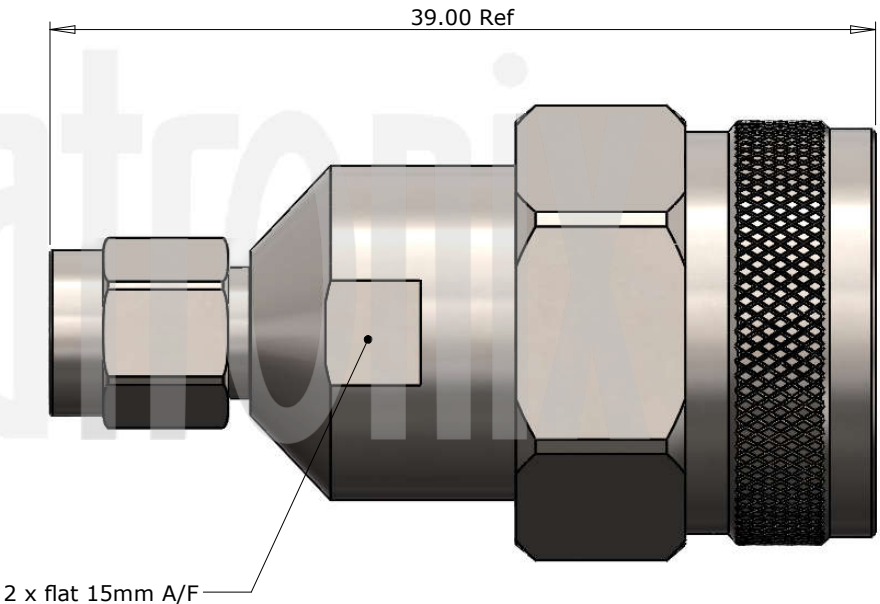
Durability 500 mating cycles

2. Environmental

RoHS Compliant Yes
Temperature Range -40 to +85 degrees C

3. Electrical

Impedance 50 ohms
Interface Frequency 18 GHz
VSWR < 1.2 @ 18 GHz



				<p>Unless otherwise specified tolerances 0.5-5 = ± 0.2 >5-30 = ± 0.4 >30-120 = ± 0.6 >120-315 = ± 1.0 >315-1000 = ± 1.6 Angles = $\pm 5^\circ$ Units = mm</p>		Author	PJP
						Drawn by	PJP
						Drawing date	28/11/2025
						Checked by	DB
4	Pin	Beryllium Copper	Gold	<p>This document is the confidential property of Gigatronix Limited and may not be copied, reproduced or transmitted to any third party without written authorisation.</p>	<p>Part Number MA15-NT15-A04 Title: SMA Plug to N Type Plug Precision Adaptor, Stainless Steel</p>	Checked date	01/12/2025
3	Dielectric	PTFE / PEI	White / Yellow			Scale	2.5 : 1
2	Contact	Beryllium Copper	Gold				
1	Body	Stainless Steel	Passivated				
Description		Material	Finish				