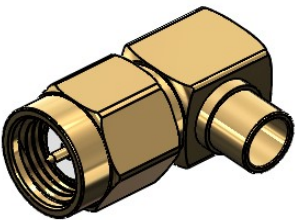


| Revisions |            |                 |
|-----------|------------|-----------------|
| Issue     | Date       | Note            |
| 3         | 04/06/2025 | See GTXPDC/1101 |



1. Mechanical

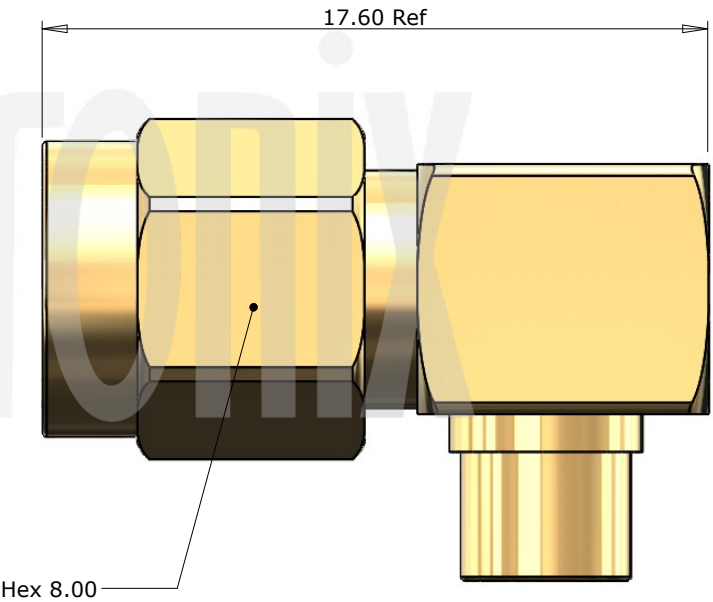
|                 |                   |
|-----------------|-------------------|
| Cable Retention | 272N              |
| Durability      | 500 mating cycles |
| Fixing Method   | Solder            |
| Mating Torque   | 0.79 to 1.13Nm    |


2. Environmental

|                   |                       |
|-------------------|-----------------------|
| RoHS Compliant    | Yes                   |
| Temperature Range | -65 to +165 degrees C |

3. Electrical

|                         |                        |
|-------------------------|------------------------|
| Dielectric Withstanding | 1000 Volts RMS Maximum |
| Impedance               | 50 ohms                |
| Interface Frequency     | 12.4 GHz               |
| Working Voltage         | 500 Volts RMS Maximum  |



|                    |              |                 |               |   |  |              |              |
|--------------------|--------------|-----------------|---------------|---|--|--------------|--------------|
|                    |              |                 |               | Unless otherwise specified tolerances<br>0.5-5 = ±0.2<br>>5-30 = ±0.4<br>>30-120 = ±0.6<br>>120-315 = ±1.0<br>>315-1000 = ±1.6<br>Angles = ±5°<br>Units = mm        |                                   | Author       | PJP          |
|                    |              |                 |               |   |  | Drawn by     | PJP          |
|                    |              |                 |               |   |  | Drawing date | 07/08/2020   |
| 5                  | End Cap      | Brass           | Gold          |   |  | Checked by   | SM           |
| 4                  | Coupling Nut | Brass           | Gold          |   |  | Checked date | 14/08/2020   |
| 3                  | Dielectric   | PTFE            | White         | This document is the confidential property of Gigatronix Limited and may not be copied, reproduced or transmitted to any third party without written authorisation. | <b>Part Number</b> MA17-0402-R01<br><br><b>Title:</b> SMA Solder Right Angle Plug, Gold Plated, RG402, .141 semi-rigid | Scale        | Not to scale |
| 2                  | Pin          | Brass           | Gold          |   |  |              |              |
| 1                  | Body         | Brass           | Gold          |   |  |              |              |
| <b>Description</b> |              | <b>Material</b> | <b>Finish</b> |   |  |              |              |

| Revisions |            |                 |
|-----------|------------|-----------------|
| Issue     | Date       | Note            |
| 3         | 04/06/2025 | See GTXPDC/1101 |

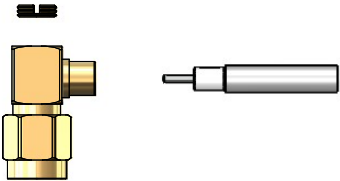
## ASSEMBLY INSTRUCTIONS

### Assembly Instructions

1) Strip the cable to the dimensions as shown, taking care not to nick the centre conductor.

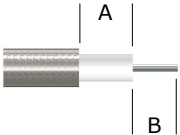
2) Slide the cable into the body so that the centre core of the cable locates in the internal mounting post. Then solder the centre core.

3) Solder the outer shield of the cable to the back of the connector and screw in the end cap.

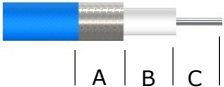


### Strip Dimensions:

Conformable Cable - A=2.7mm, B=1.5mm  
Semi Rigid Cable - A=1.7mm, B=2.5mm



Conformable FEP Cable - A=7.8mm, B=2.7mm, C=1.5mm



|             |              |          |        |   |
|-------------|--------------|----------|--------|---|
|             |              |          |        | Unless otherwise specified tolerances<br>0.5-5 = $\pm 0.2$<br>>5-30 = $\pm 0.4$<br>>30-120 = $\pm 0.6$<br>>120-315 = $\pm 1.0$<br>>315-1000 = $\pm 1.6$<br>Angles = $\pm 5^\circ$<br>Units = mm |
|             |              |          |        |   |
|             |              |          |        |   |
| 5           | End Cap      | Brass    | Gold   |   |
| 4           | Coupling Nut | Brass    | Gold   |   |
| 3           | Dielectric   | PTFE     | White  | This document is the confidential property of Gigatronix Limited and may not be copied, reproduced or transmitted to any third party without written authorisation.                             |
| 2           | Pin          | Brass    | Gold   |   |
| 1           | Body         | Brass    | Gold   |   |
| Description |              | Material | Finish |   |



|   |               |
|---|---------------|
| Author  | PJP           |
| Drawn by  | PJP           |
| Drawing date  | 07/08/2020    |
| Checked by  | SM            |
| Checked date  | 14/08/2020    |
| Scale   | Not to scale  |
| Part Number   | MA17-0402-R01 |
| Title: SMA Solder Right Angle Plug, Gold Plated, RG402, .141 semi-rigid |               |