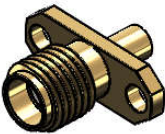


Revisions		
Issue	Date	Note
1	30/01/2025	See GTXPDC/1051



f Mechanical

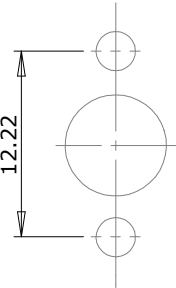
Cable Retention	136N
Durability	500 mating cycles
Fixing Method	Solder
Contact Retention	27N

2. Environmental

RoHS Compliant	Yes
Temperature Range	-65 to +165 degrees C

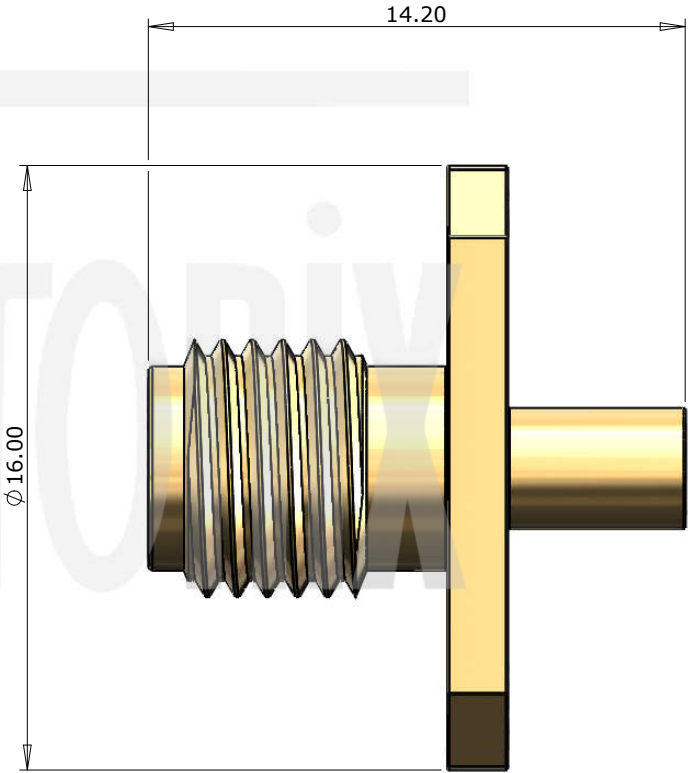
3. Electrical


Dielectric Withstanding	1000 Volts RMS Maximum
Impedance	50 ohms
Interface Frequency	18 GHz
Working Voltage	335 Volts RMS Maximum



Panel Holes
2 x 2.60mm
1 x 6.50

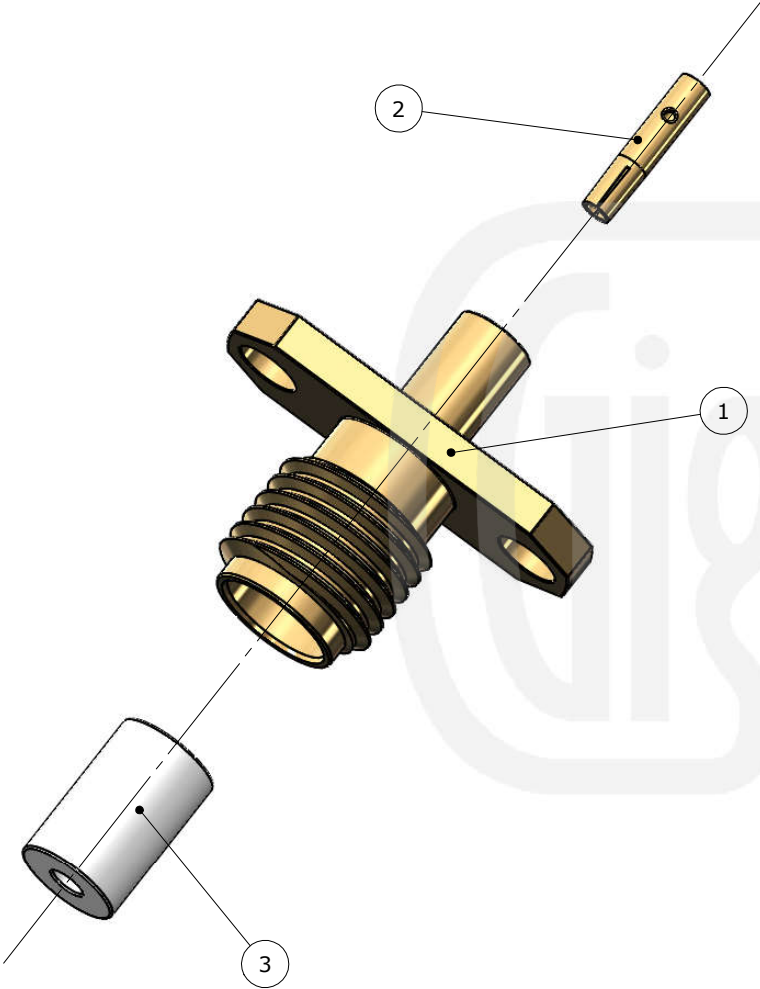
Panel Cut Out



				<p>Unless otherwise specified tolerances</p> <p>0.5-5 = ±0.2</p> <p>>5-30 = ±0.4</p> <p>>30-120 = ±0.6</p> <p>>120-315 = ±1.0</p> <p>>315-1000 = ±1.6</p> <p>Angles = ±5°</p> <p>Units = mm</p>		Author PJP	
						Drawn by PJP	
						Drawing date 30/01/2025	
						Checked by DB	
						Checked date 30/4/2025	
						Scale Not to scale	
3	Dielectric	PTFE	White	<p>This document is the confidential property of Gigatronix Limited and may not be copied, reproduced or transmitted to any third party without written authorisation.</p>	Part Number MA36-0405-R01		
2	Contact	Beryllium Copper	Gold		Title: SMA Flange Jack, 2 Hole, Brass, Gold Plated, RG405, .085 semi-rigid		
1	Body	Brass	Gold				
	Description	Material	Finish				

Revisions		
Issue	Date	Note
1	30/01/2025	See GTXPDC/1051

ASSEMBLY INSTRUCTIONS



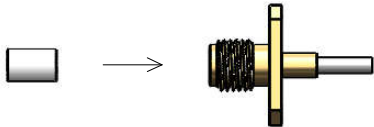
Assembly Instructions:

1) Strip the cable to the dimensions as shown, taking care not to nick the centre core.



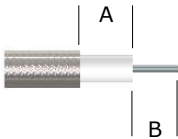
2) Solder the contact onto the centre core, then screw the body fully into an SMA Jack Gauge. Slide the contact into the back of the body until it meets the gauge and solder the cable to the mandril.

3) Fit the insulator into the front of the body using an SMA Insertion Tool.




Strip Dimensions:

Semi Rigid (using a 0.5mm spacer) - A=0.0mm, B=3.0mm
Conformable (using a 0.2mm spacer) - A=0.0mm, B=2.7mm



Conformable FEP (using a 0.2mm spacer) - A=8.0mm, B=0.0mm, C=2.7mm



				Unless otherwise specified tolerances 0.5-5 = ±0.2 >5-30 = ±0.4 >30-120 = ±0.6 >120-315 = ±1.0 >315-1000 = ±1.6 Angles = ±5° Units = mm		Author	PJP
						Drawn by	PJP
						Drawing date	30/01/2025
						Checked by	DB
						Checked date	30/4/2025
3	Dielectric	PTFE	White	This document is the confidential property of Gigatronix Limited and may not be copied, reproduced or transmitted to any third party without written authorisation.	Part Number MA36-0405-R01 Title: SMA Flange Jack, 2 Hole, Brass, Gold Plated, RG405, .085 semi-rigid	Scale	Not to scale
2	Contact	Beryllium Copper	Gold				
1	Body	Brass	Gold				
Description		Material	Finish				