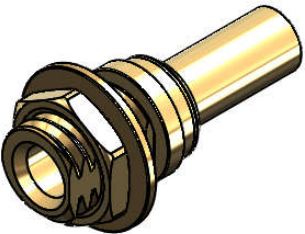


Revisions		
Issue	Date	Note
2	08/12/2025	See GTXPDC/1171



1. Mechanical

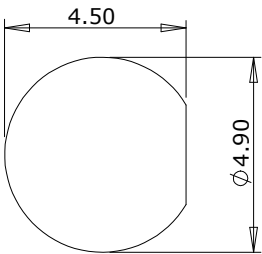
Cable Retention	Equal to breaking strain of cable
Durability	500 mating cycles
Lock Nut Torque	0.9 to 1.1Nm / 8-10 in-lbs
Contact Termination	Solder
Fixing Method	Crimp

2. Environmental

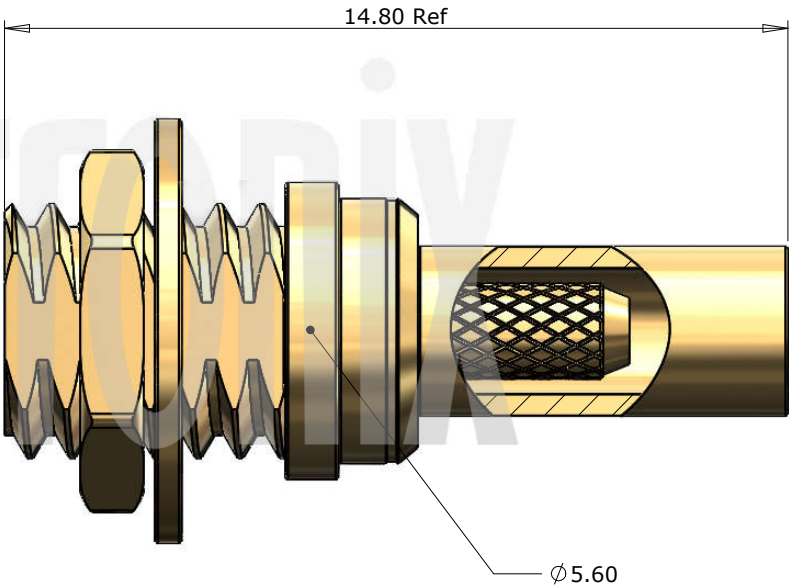
RoHS Compliant	Yes
Temperature Range	-65 to +165 degrees C


3. Electrical

Dielectric Withstanding	500 Volts RMS Maximum
Impedance	50 ohms
Interface Frequency	6 GHz
Working Voltage	170 Volts RMS Maximum



Panel Cut Out



				<p>Unless otherwise specified tolerances 0.5-5 = <math>\pm 0.2</math> &gt;5-30 = <math>\pm 0.4</math> &gt;30-120 = <math>\pm 0.6</math> &gt;120-315 = <math>\pm 1.0</math> &gt;315-1000 = <math>\pm 1.6</math> Angles = <math>\pm 5^\circ</math> Units = mm</p>		Author	PJP
						Drawn by	PJP
6	Lock Nut	Brass	Gold			Drawing date	21/06/2024
5	Washer	Brass	Gold			Checked by	DB
4	Ferrule	Brass	Gold			Checked date	21/06/2024
3	Dielectric	PTFE	White	<p>This document is the confidential property of Gigatronix Limited and may not be copied, reproduced or transmitted to any third party without written authorisation.</p>	<p><b>Part Number</b> MM02-0178-C01</p> <p><b>Title:</b> MMCX Crimp Bulkhead Jack, Gold Plated, RG178</p>	Scale	Not to scale
2	Contact	Phosphor Bronze	Gold				
1	Body	Brass	Gold				
<b>Description</b>		<b>Material</b>	<b>Finish</b>				

Revisions		
Issue	Date	Note
2	08/12/2025	See GTXPDC/1171

ASSEMBLY INSTRUCTIONS

Assembly Instructions

1) Slide the ferrule onto the cable and strip the cable to the dimensions as shown, taking care not to nick the centre conductor or braid.



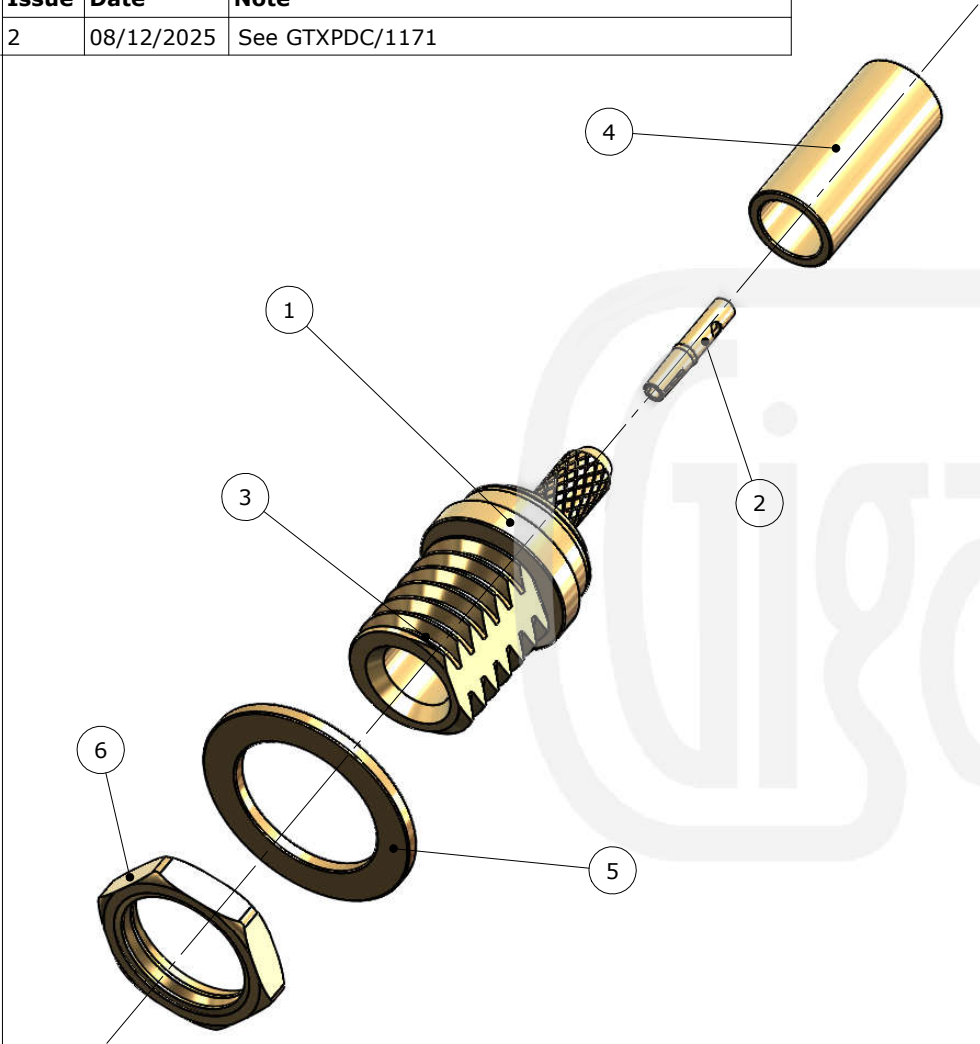
2) Solder the contact onto the centre core and then slide the contact into the body until fully located, ensuring that the cable braid is on the outside of the connector mandril.


3) Slide the ferrule forward and crimp.



**Crimp Die Sizes:**  
2.67mm Hex., Solder centre core

**Strip Dimensions:**  
A=4.5mm, B=2.0mm, C=1.4mm



				Unless otherwise specified tolerances 0.5-5 = ±0.2 >5-30 = ±0.4 >30-120 = ±0.6 >120-315 = ±1.0 >315-1000 = ±1.6 Angles = ±5° Units = mm		<b>Author</b>		PJP
						<b>Drawn by</b>		PJP
6	Lock Nut	Brass	Gold			<b>Drawing date</b>		21/06/2024
5	Washer	Brass	Gold			<b>Checked by</b>		DB
4	Ferrule	Brass	Gold			<b>Checked date</b>		21/06/2024
3	Dielectric	PTFE	White			<b>Scale</b>		Not to scale
2	Contact	Phosphor Bronze	Gold	This document is the confidential property of Gigatronix Limited and may not be copied, reproduced or transmitted to any third party without written authorisation.	<b>Part Number</b>			MM02-0178-C01
1	Body	Brass	Gold		<b>Title:</b> MMCX Crimp Bulkhead Jack, Gold Plated, RG178			
	<b>Description</b>	<b>Material</b>	<b>Finish</b>					