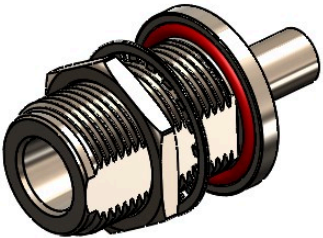


Revisions		
Issue	Date	Note
2	20/01/2026	See GTXPDC/1190



1. Mechanical

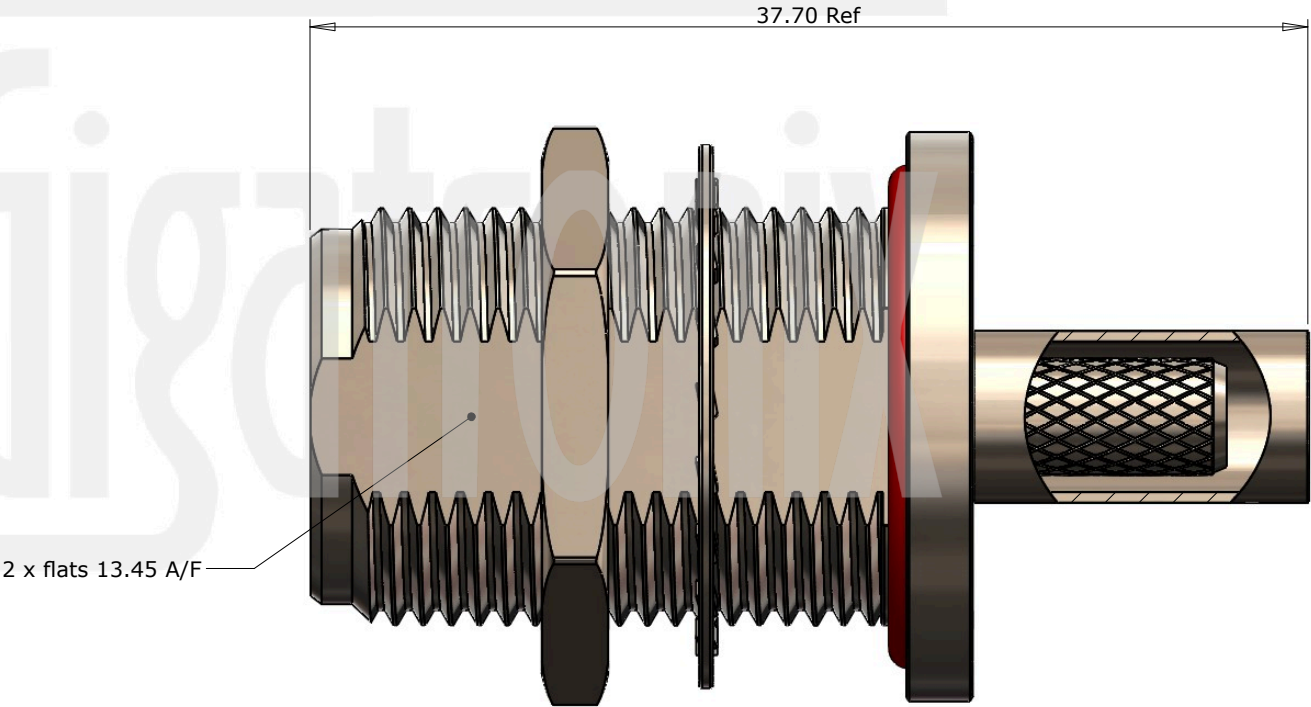
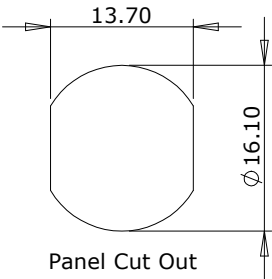
Fixing Method	Solder or Crimp
Durability	500 mating cycles
Cable Retention	Equal to breaking strain of cable

2. Environmental


RoHS Compliant	Yes
Temperature Range	-65 to +165 degrees C

3. Electrical

Dielectric Withstanding	2500 Volts RMS Maximum
Impedance	50 ohms
Interface Frequency	11 GHz
Working Voltage	1500 Volts RMS Maximum



9	Insulator	PTFE	White
8	Washer	Brass	Nickel
7	Lock Nut	Brass	Nickel
6	O Ring	Silicone	Red
5	Ferrule	Brass	Nickel
4	Dielectric	PTFE	White
3	Pin	Brass	Gold
2	Contact	Bronze	Gold
1	Body	Brass	Nickel
Description		Material	Finish

<div>Unless otherwise specified tolerances</div> <div>0.5-5 = ±0.2</div> <div>&gt;5-30 = ±0.4</div> <div>&gt;30-120 = ±0.6</div> <div>&gt;120-315 = ±1.0</div> <div>&gt;315-1000 = ±1.6</div> <div>Angles = ±5°</div> <div>Units = mm</div>			Author	PJP
			Drawn by	PJP
			Drawing date	12/06/2024
			Checked by	DB
			Checked date	18/06/2024
			Scale	Not to scale
<div>This document is the confidential property of Gigatronix Limited and may not be copied, reproduced or transmitted to any third party without written authorisation.</div>	Part Number		NT02-0400-C06-1	
	Title:		N Type Crimp Bulkhead Jack, Nickel Plated,RG142, RG223, RG400	

Revisions		
Issue	Date	Note
2	20/01/2026	See GTXPDC/1190

# ASSEMBLY INSTRUCTIONS



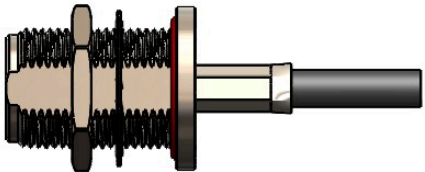
## Assembly Instructions

1) Slide the ferrule onto the cable and strip the cable to the dimensions as shown, taking care not to nick the centre conductor or braid.



2) Slide the insulator over the centre core then solder or crimp the pin onto the centre core. Next slide the pin into the body until fully located in the integral contact, ensuring that the cable braid is on the outside of the connector mandril.

3) Slide the ferrule forward and crimp.



**Crimp Die Sizes:**  
5.41mm Hex., 1.20 sq.

**Strip Dimensions:**  
A=7.00mm, B=1.50mm, C=2.50mm



9	Insulator	PTFE	White
8	Washer	Brass	Nickel
7	Lock Nut	Brass	Nickel
6	O Ring	Silicone	Red
5	Ferrule	Brass	Nickel
4	Dielectric	PTFE	White
3	Pin	Brass	Gold
2	Contact	Bronze	Gold
1	Body	Brass	Nickel
Description		Material	Finish

Unless otherwise specified tolerances  
0.5-5 = ±0.2  
>5-30 = ±0.4  
>30-120 = ±0.6  
>120-315 = ±1.0  
>315-1000 = ±1.6  
Angles = ±5°  
Units = mm

This document is the confidential property of Gigatronix Limited and may not be copied, reproduced or transmitted to any third party without written authorisation.



<div> <div></div> <div></div> </div>		Author	PJP
		Drawn by	PJP
		Drawing date	12/06/2024
		Checked by	DB
		Checked date	18/06/2024
		Scale	Not to scale
Part Number		NT02-0400-C06-1	
Title:		N Type Crimp Bulkhead Jack, Nickel Plated, RG142, RG223, RG400	