

Revisions		
Issue	Date	Note
2	20/05/2025	See GTXPDC/1096

1. Mechanical

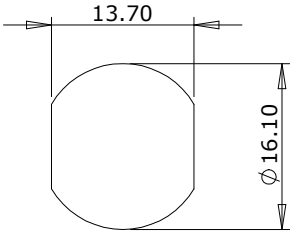
Cable Retention	136N
Fixing Method	Solder
Durability	500 mating cycles
Contact Retention	27N
Maximum Panel Thickness	7.00mm

2. Environmental

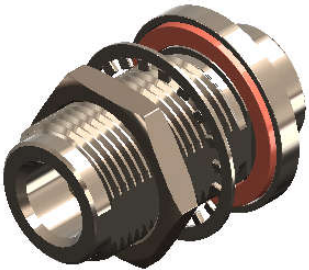
RoHS Compliant	Yes
Temperature Range	-65 to +165 degrees C

3. Electrical

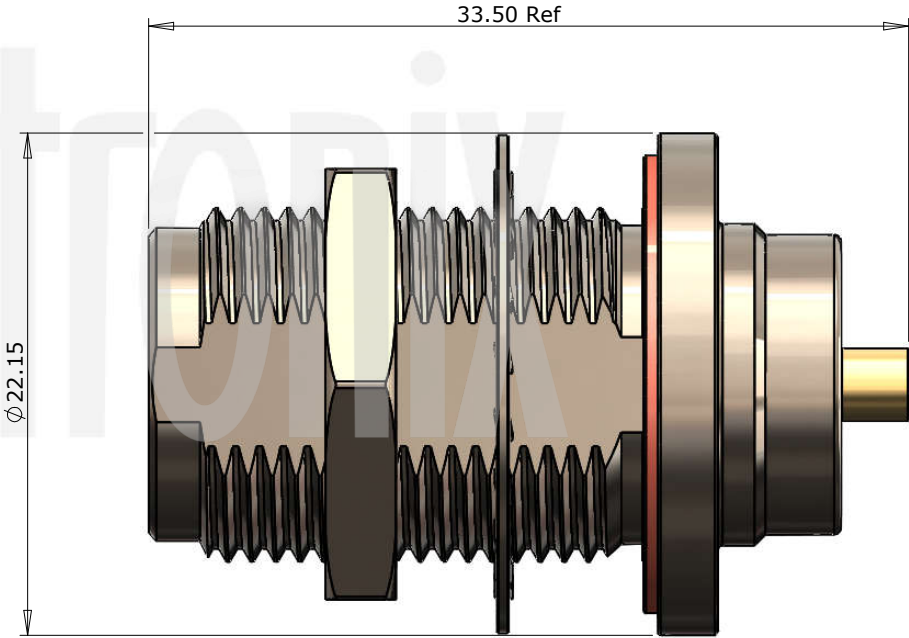
Dielectric Withstanding	2500 Volts RMS Maximum
Impedance	50 ohms
Interface Frequency	11 GHz
Working Voltage	1500 Volts RMS Maximum




Panel Cut Out



DATASHEET



				<div>Unless otherwise specified tolerances 0.5-5 = ±0.2 &gt;5-30 = ±0.4 &gt;30-120 = ±0.6 &gt;120-315 = ±1.0 &gt;315-1000 = ±1.6 Angles = ±5° Units = mm</div>	<div></div>	<b>Author</b> PJP	
7	Washer	Brass	Nickel			<b>Drawn by</b> PJP	
6	Lock Nut	Brass	Nickel			<b>Drawing date</b> 30/08/2022	
5	Gasket	Rubber	Red			<b>Checked by</b> DB	
4	Dielectric	PTFE	White			<b>Checked date</b> 05/09/2022	
3	Pin	Brass	Gold			<b>Scale</b> Not to scale	
2	Contact	Brass	Gold	<div>This document is the confidential property of Gigatronix Limited and may not be copied, reproduced or transmitted to any third party without written authorisation.</div>	<b>Part Number</b> NT02-0405-R06		
1	Body	Brass	Gold/Nickel		<b>Title:</b> N Type Solder Bulkhead Jack, Nickel Plated, RG405, .085 semi-rigid		
	<b>Description</b>	<b>Material</b>	<b>Finish</b>				

Revisions		
Issue	Date	Note
2	20/05/2025	See GTXPDC/1096

# ASSEMBLY INSTRUCTIONS

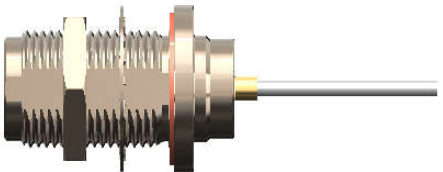


## Assembly Instructions:

1) Strip the cable to the dimensions as shown, taking care not to nick the centre core.

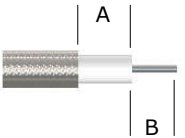


2) Solder the contact onto the cable and then insert the cable and contact into the body until fully located. Solder the outer shield of the cable to body of the connector.

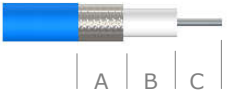



## Strip Dimensions:

Semi Rigid Cable (using a 0.5mm spacer) - A=0.0mm, B=2.3mm  
 Conformable Cable - A=0.5mm, B=1.8mm



Conformable FEP Cable - A=6.2mm, B=0.5mm, C=1.8mm



				Unless otherwise specified tolerances 0.5-5 = ±0.2 >5-30 = ±0.4 >30-120 = ±0.6 >120-315 = ±1.0 >315-1000 = ±1.6 Angles = ±5° Units = mm		Author		PJP
7	Washer	Brass	Nickel			Drawn by		PJP
6	Lock Nut	Brass	Nickel			Drawing date		30/08/2022
5	Gasket	Rubber	Red			Checked by		DB
4	Dielectric	PTFE	White			Checked date		05/09/2022
3	Pin	Brass	Gold			Scale		Not to scale
2	Contact	Brass	Gold	This document is the confidential property of Gigatronix Limited and may not be copied, reproduced or transmitted to any third party without written authorisation.	Part Number		NT02-0405-R06	
1	Body	Brass	Gold/Nickel		Title: N Type Solder Bulkhead Jack, Nickel Plated, RG405, .085 semi-rigid			
	Description	Material	Finish					