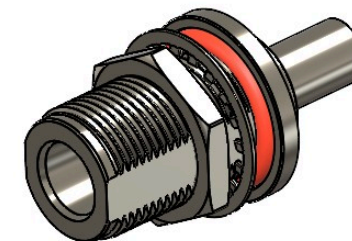


Revisions

Issue	Date	Note
1	08/05/2026	See GTXPDC/1215

DATASHEET



1. Mechanical

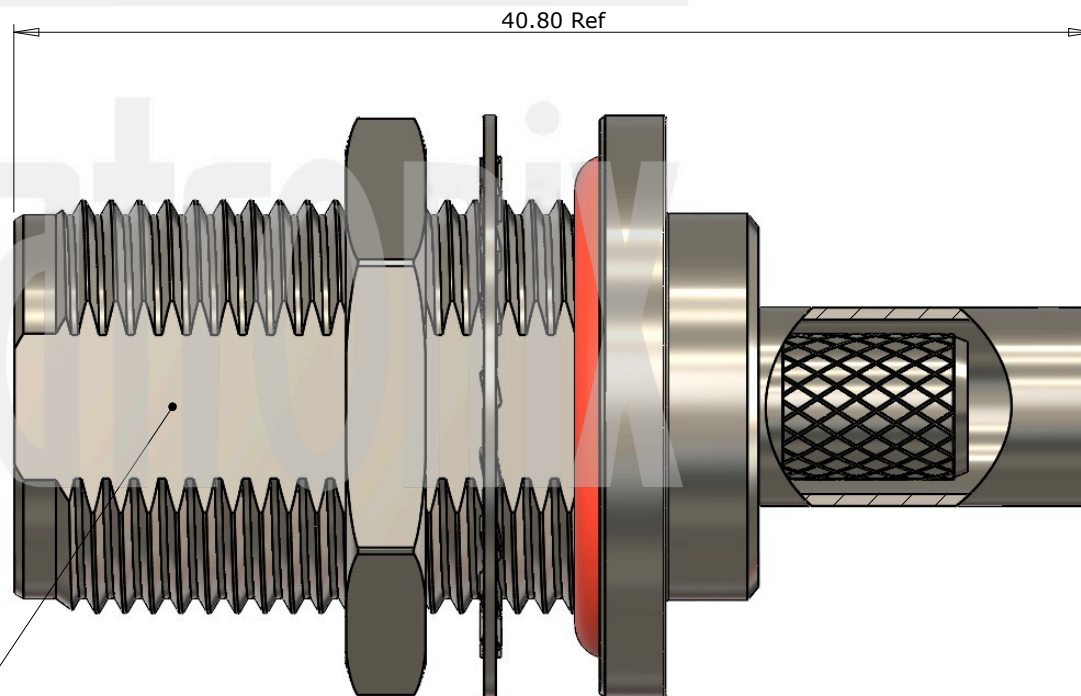
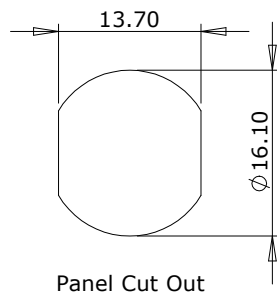
Fixing Method	Crimp
Durability	500 mating cycles
Cable Retention	Equal to breaking strain of cable
Maximum Panel Thickness	7.50mm

2. Environmental

RoHS Compliant	Yes
Temperature Range	-65 to +165 degrees C

3. Electrical

Dielectric Withstanding	2500 Volts RMS Maximum
Impedance	50 ohms
Interface Frequency	11 GHz
Working Voltage	1500 Volts RMS Maximum



8	Washer	Brass	Nickel
7	Lock Nut	Brass	Nickel
6	O Ring	Silicone	Red
5	Ferrule	Brass	Nickel
4	Dielectric	PTFE	White
3	Pin	Brass	Gold
2	Contact	Brass	Gold
1	Body	Brass	Nickel
	Description	Material	Finish

Unless otherwise specified tolerances
 0.5-5 = ±0.2
 >5-30 = ±0.4
 >30-120 = ±0.6
 >120-315 = ±1.0
 >315-1000 = ±1.6
 Angles = ±5°
 Units = mm

This document is the confidential property of Gigatronix Limited and may not be copied, reproduced or transmitted to any third party without written authorisation.

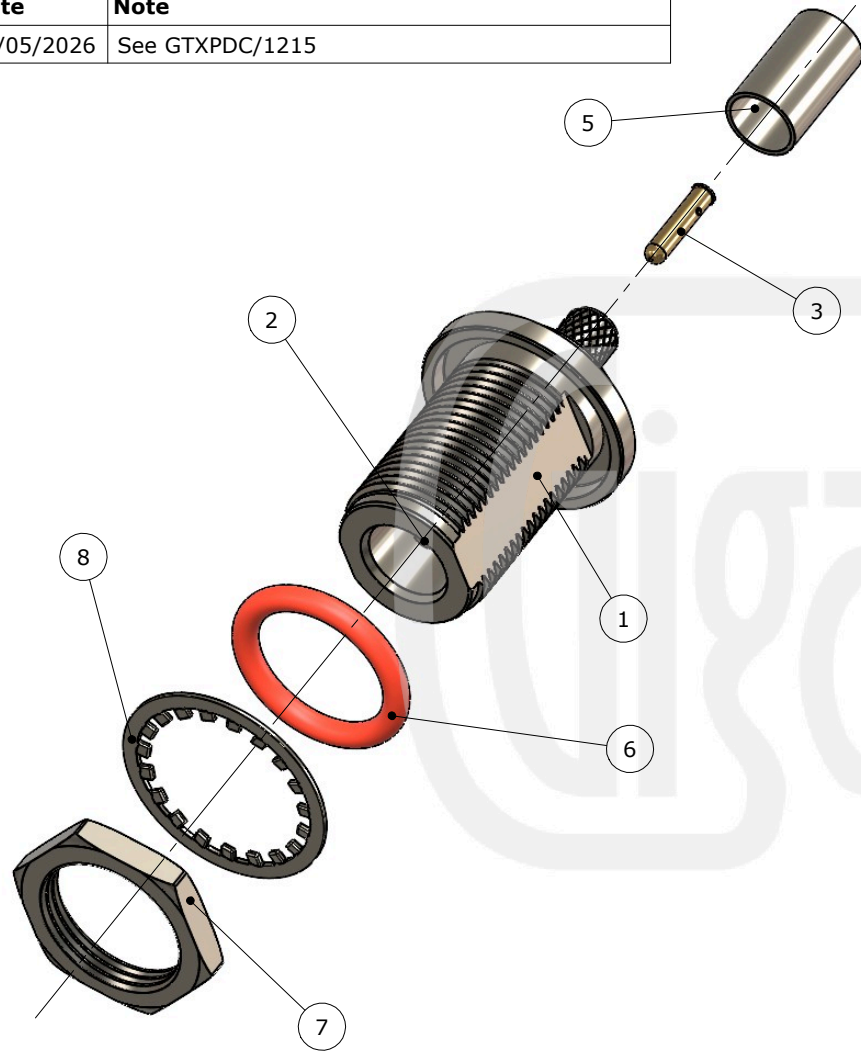


Author	PJP
Drawn by	PJP
Drawing date	08/05/2026
Checked by	DB
Checked date	11/05/2026
Scale	Not to scale

Part Number	NT02-L240-C06-1
Title:	N Type Crimp Bulkhead Jack, Nickel Plated, LBC240

Revisions		
Issue	Date	Note
1	08/05/2026	See GTXPDC/1215

ASSEMBLY INSTRUCTIONS

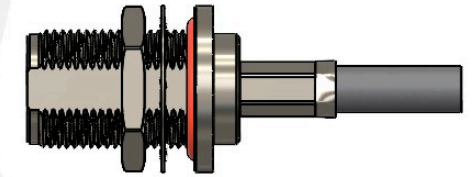


Assembly Instructions

1) Slide the ferrule onto the cable and strip the cable to the dimensions as shown, taking care not to nick the centre conductor or braid.



2) Crimp the pin onto the centre core. Then slide the pin and cable into the body until fully located in the integral contact, ensuring that the cable braid is on the outside of the connector mandril.



3) Slide the ferrule forward and crimp.

Crimp Die Sizes:
6.48mm Hex., 1.69 Hex.

Strip Dimensions:
A=8.00mm, B=5.00mm, C=4.00mm



8	Washer	Brass	Nickel
7	Lock Nut	Brass	Nickel
6	O Ring	Silicone	Red
5	Ferrule	Brass	Nickel
4	Dielectric	PTFE	White
3	Pin	Brass	Gold
2	Contact	Brass	Gold
1	Body	Brass	Nickel
	Description	Material	Finish

Unless otherwise specified tolerances
 0.5-5 = ±0.2
 >5-30 = ±0.4
 >30-120 = ±0.6
 >120-315 = ±1.0
 >315-1000 = ±1.6
 Angles = ±5°
 Units = mm

This document is the confidential property of Gigatronix Limited and may not be copied, reproduced or transmitted to any third party without written authorisation.



Author	PJP
Drawn by	PJP
Drawing date	08/05/2026
Checked by	DB
Checked date	11/05/2026
Scale	Not to scale

Part Number NT02-L240-C06-1

Title: N Type Crimp Bulkhead Jack, Nickel Plated, LBC240